

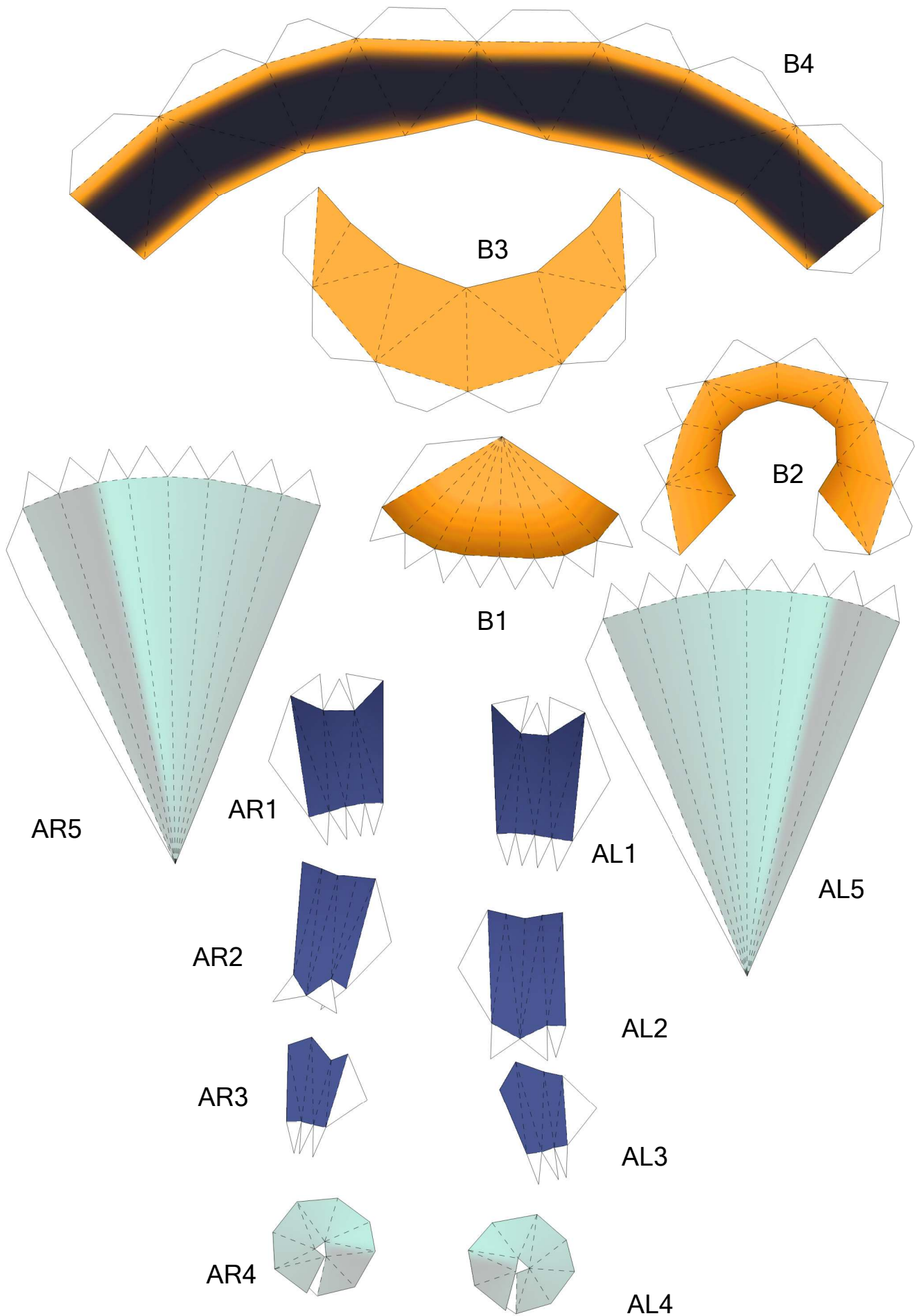


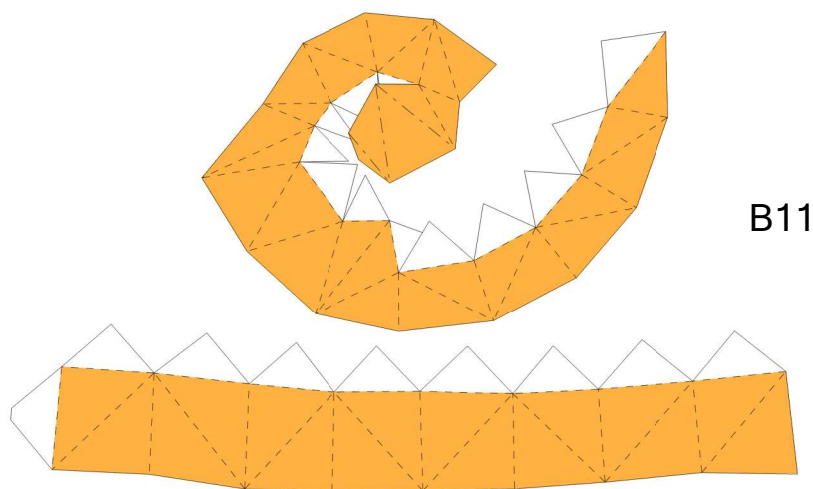
Beedrill

by Brandon

Build by Toshi

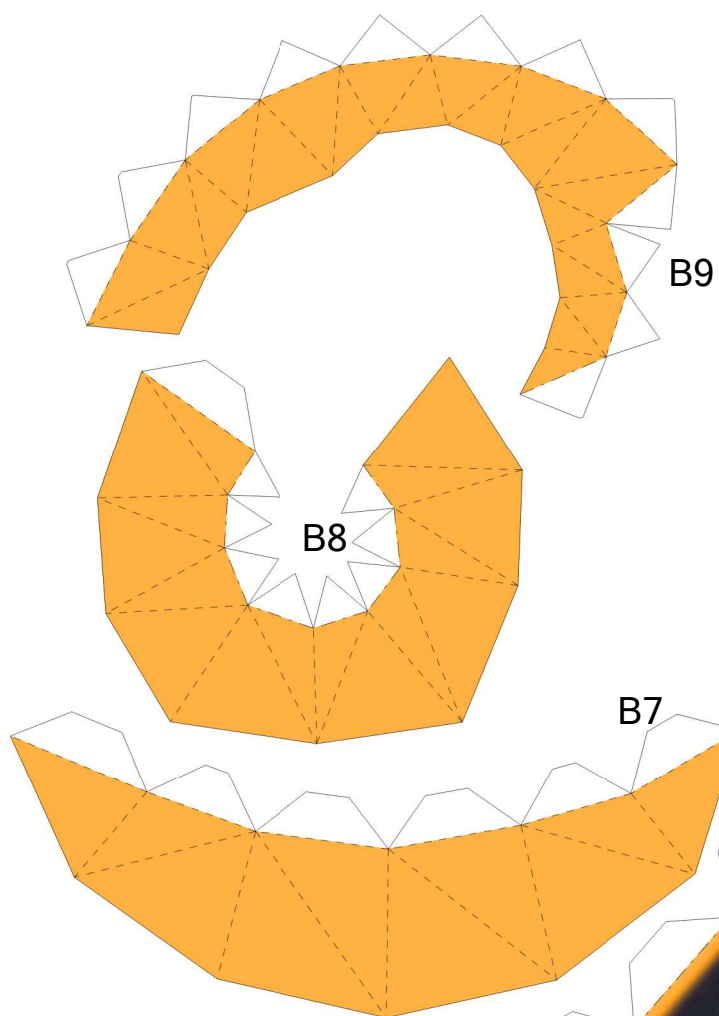






B11

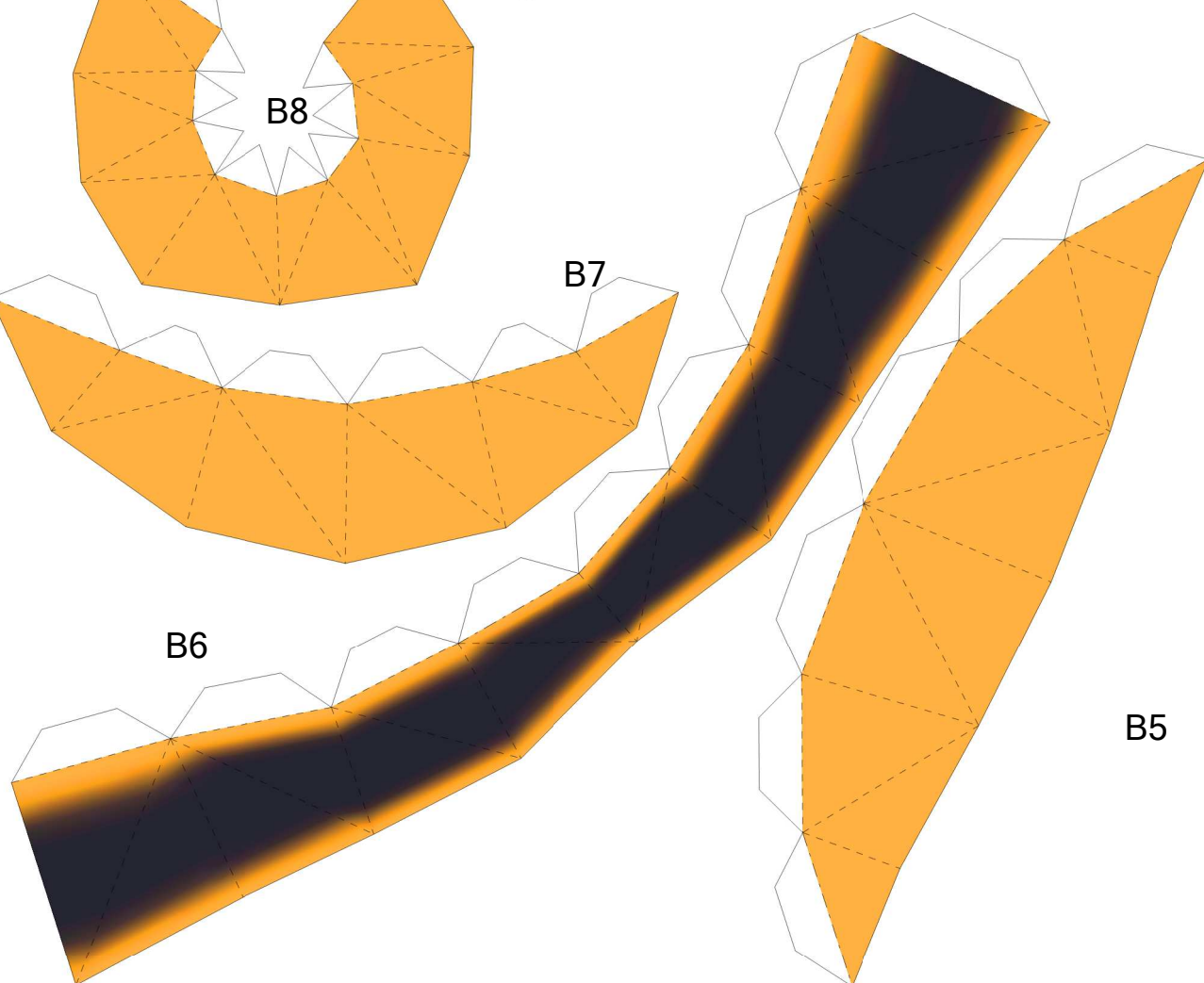
B10



B9

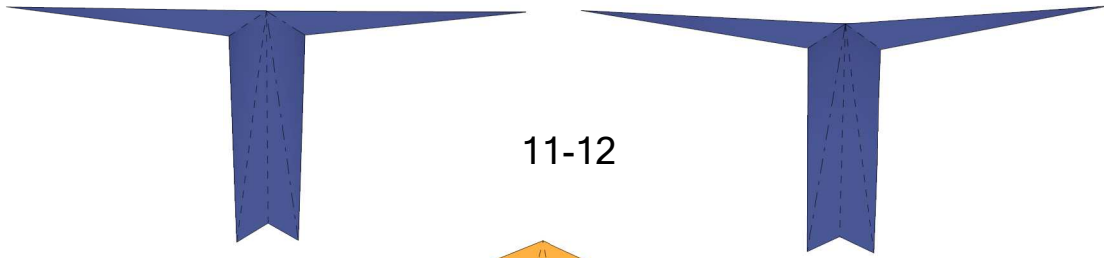
B8

B7



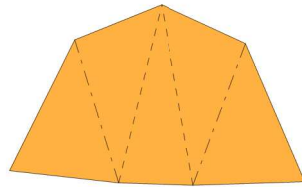
B6

B5



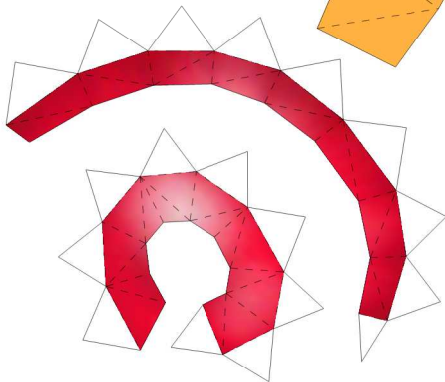
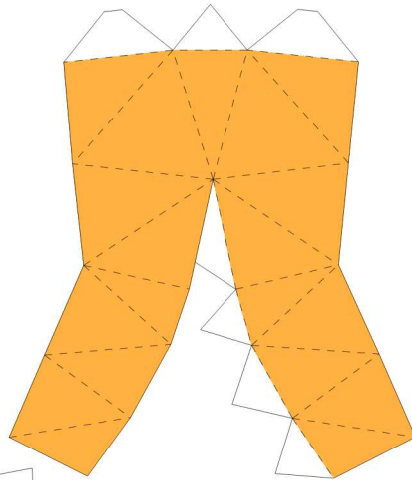
11-12

10



(Cut a small opening
in the head on piece 7
where the small notches are
to insert the antennae-
glue them on the inside)

9

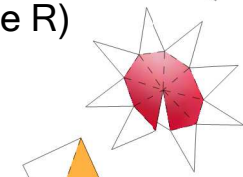
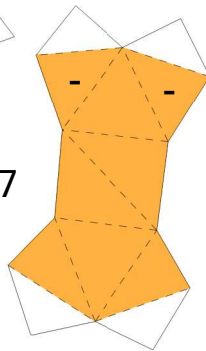


1-3 (Eye R)

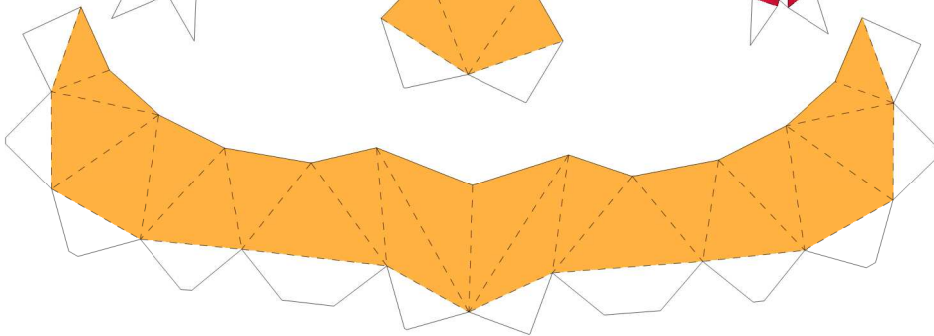


4-6 (Eye L)

7



8

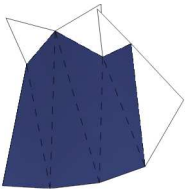




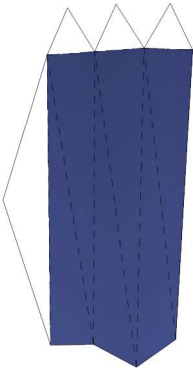
W1

Glue to piece W2

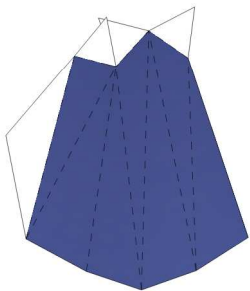
R6



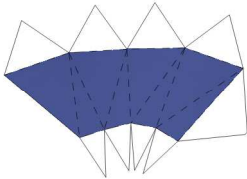
R5



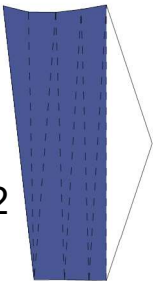
R4



R1

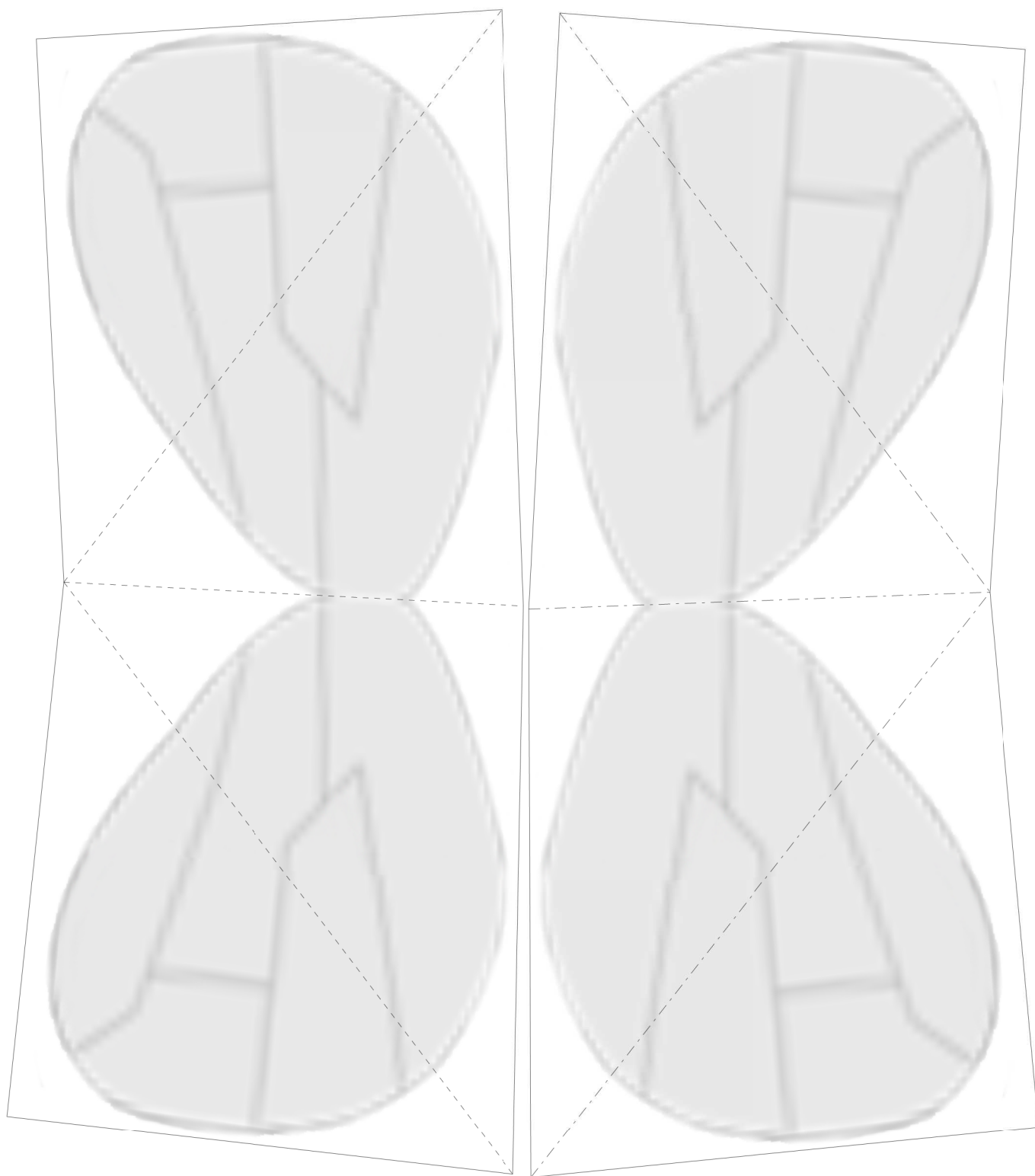


R2

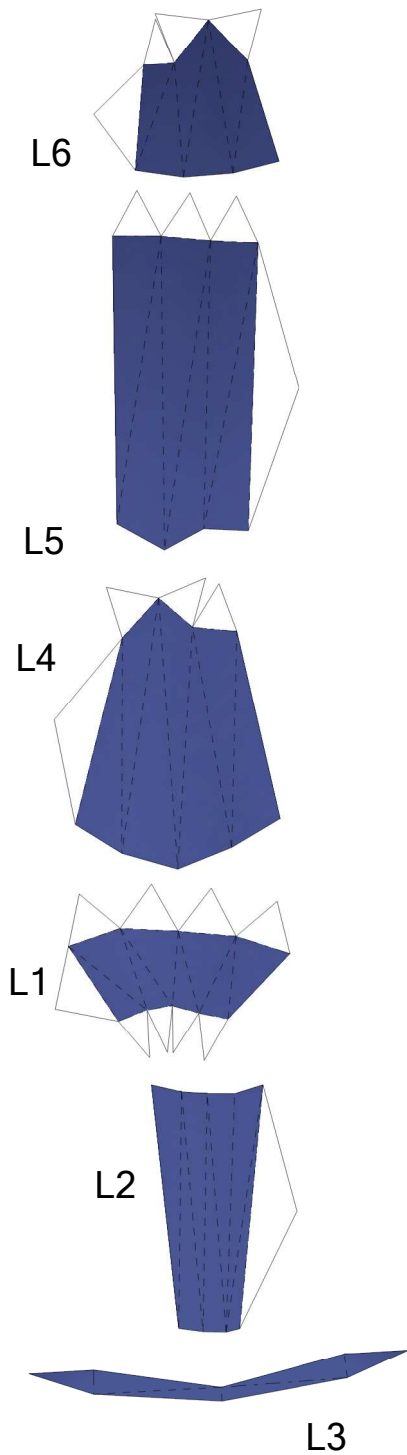


R3

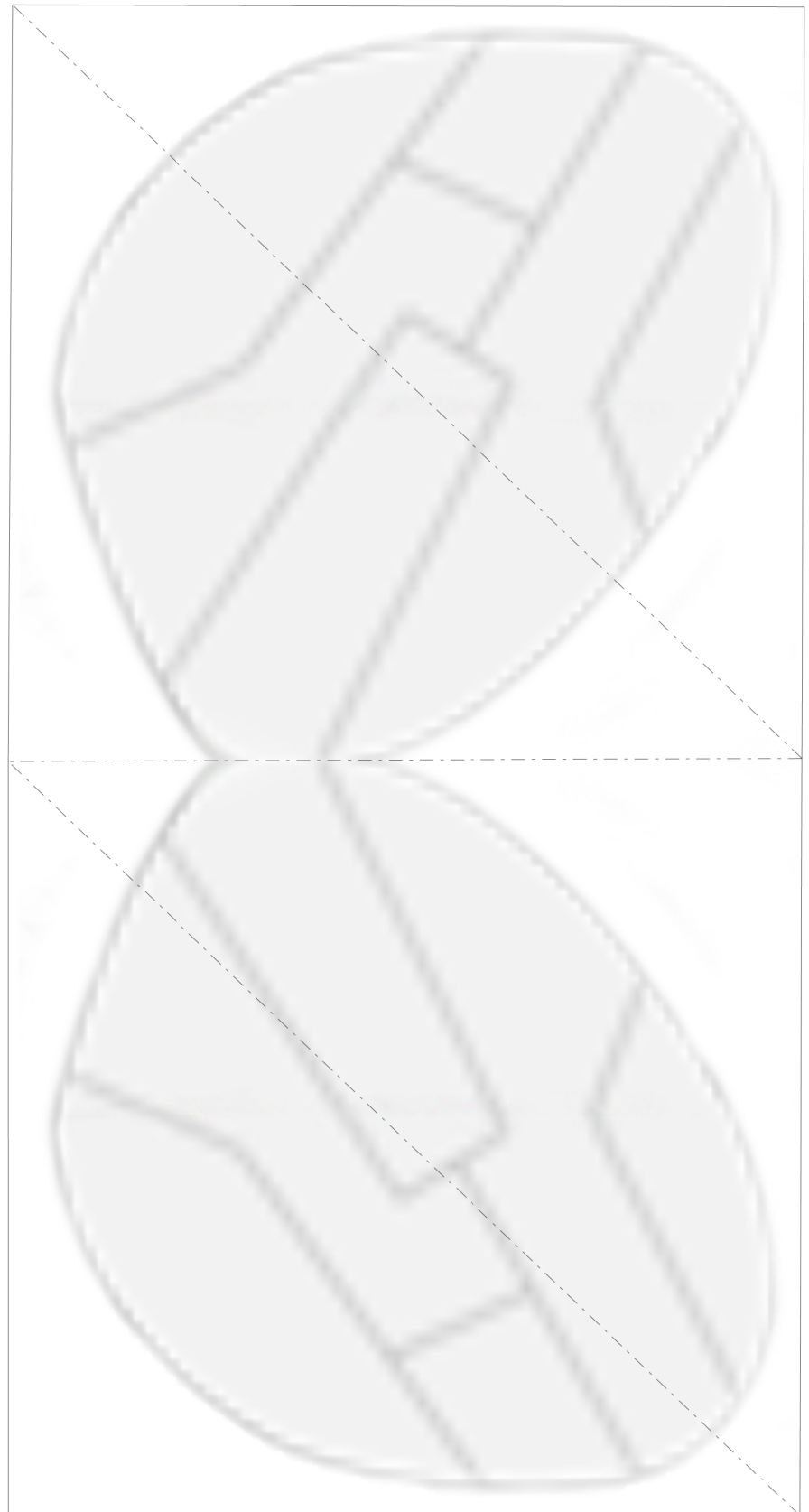




Fold on itself



Left Leg



W2

Glue to piece W1

Fold over L3/R3 on itself and glue to bottom of leg