

고양고양이 페이퍼토이



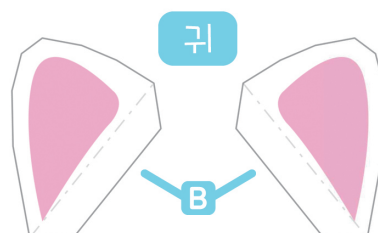
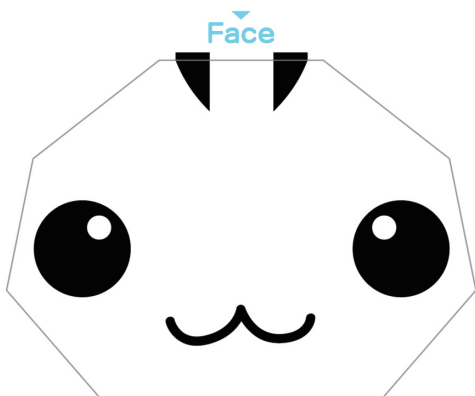
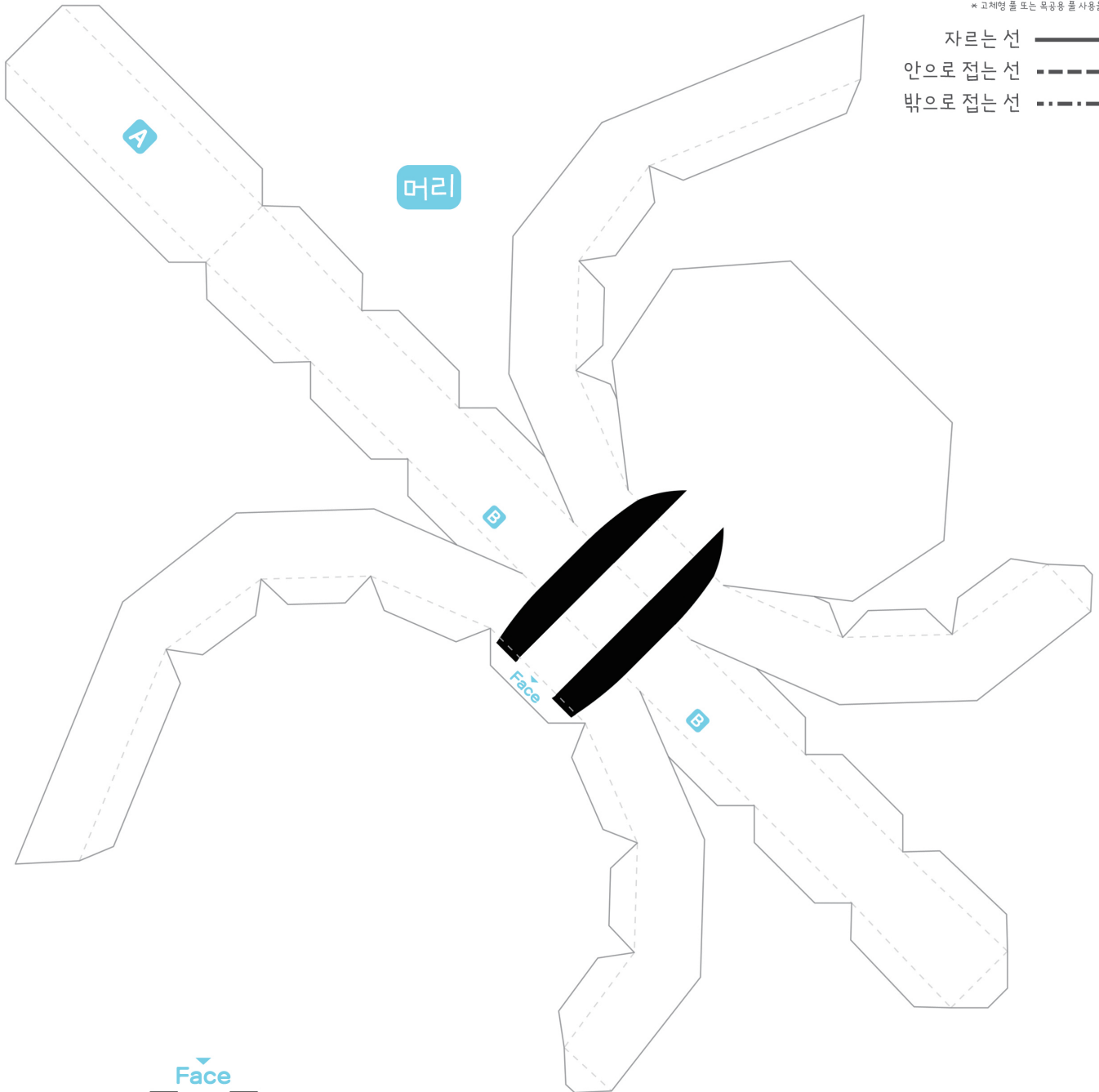
준비물 : 자, 칼 or 가위, 접착제

* 고체형 풀 또는 목공용 풀 사용을 권장합니다.

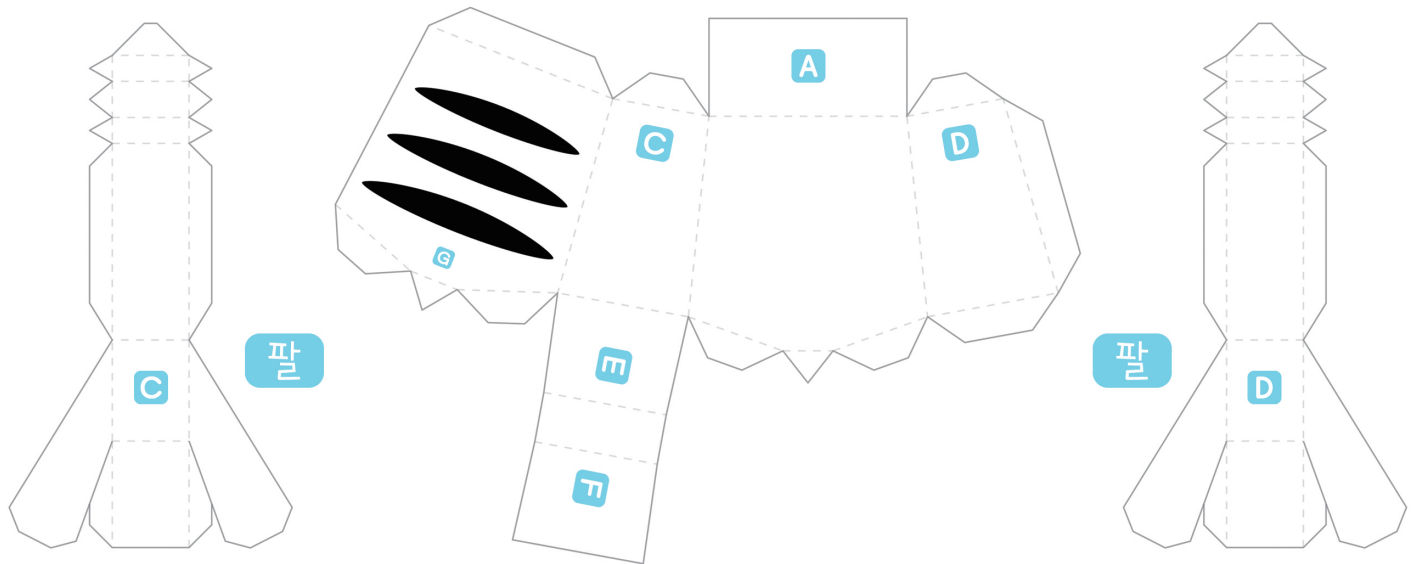
자르는 선 —————

안으로 접는 선 - - - - -

밖으로 접는 선 ······

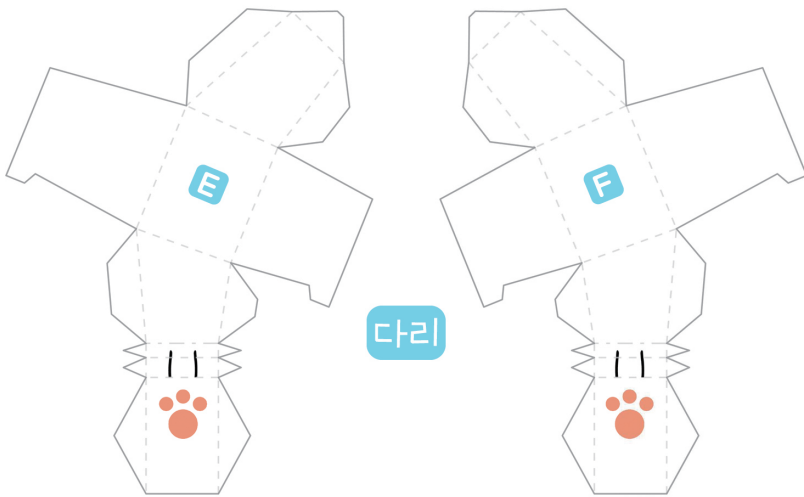


몸통

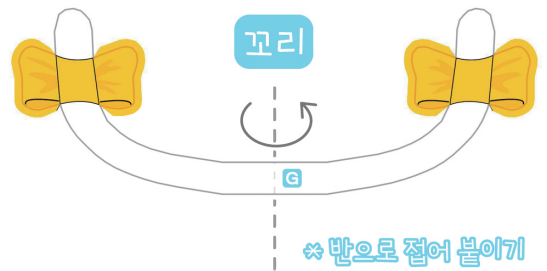


팔

팔

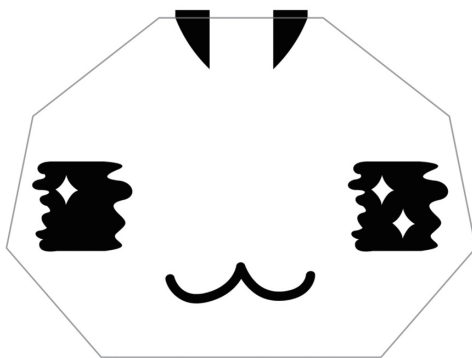
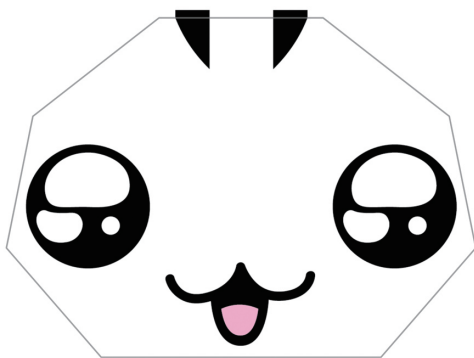


다리

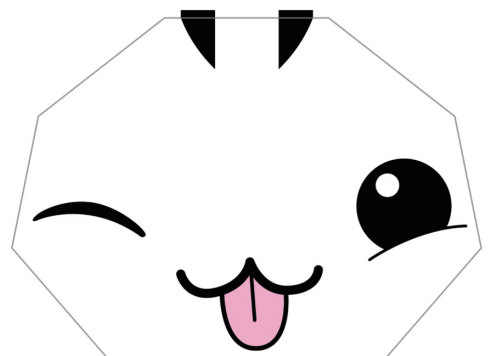
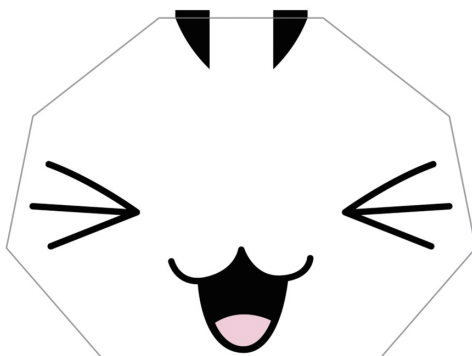
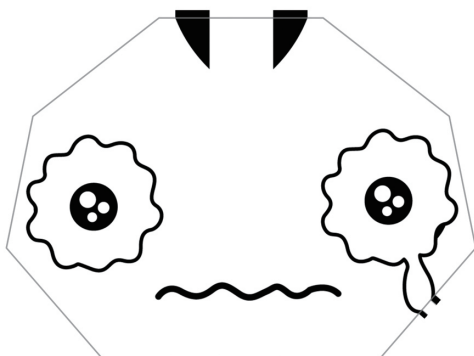


※ 반으로 접어 붙이기

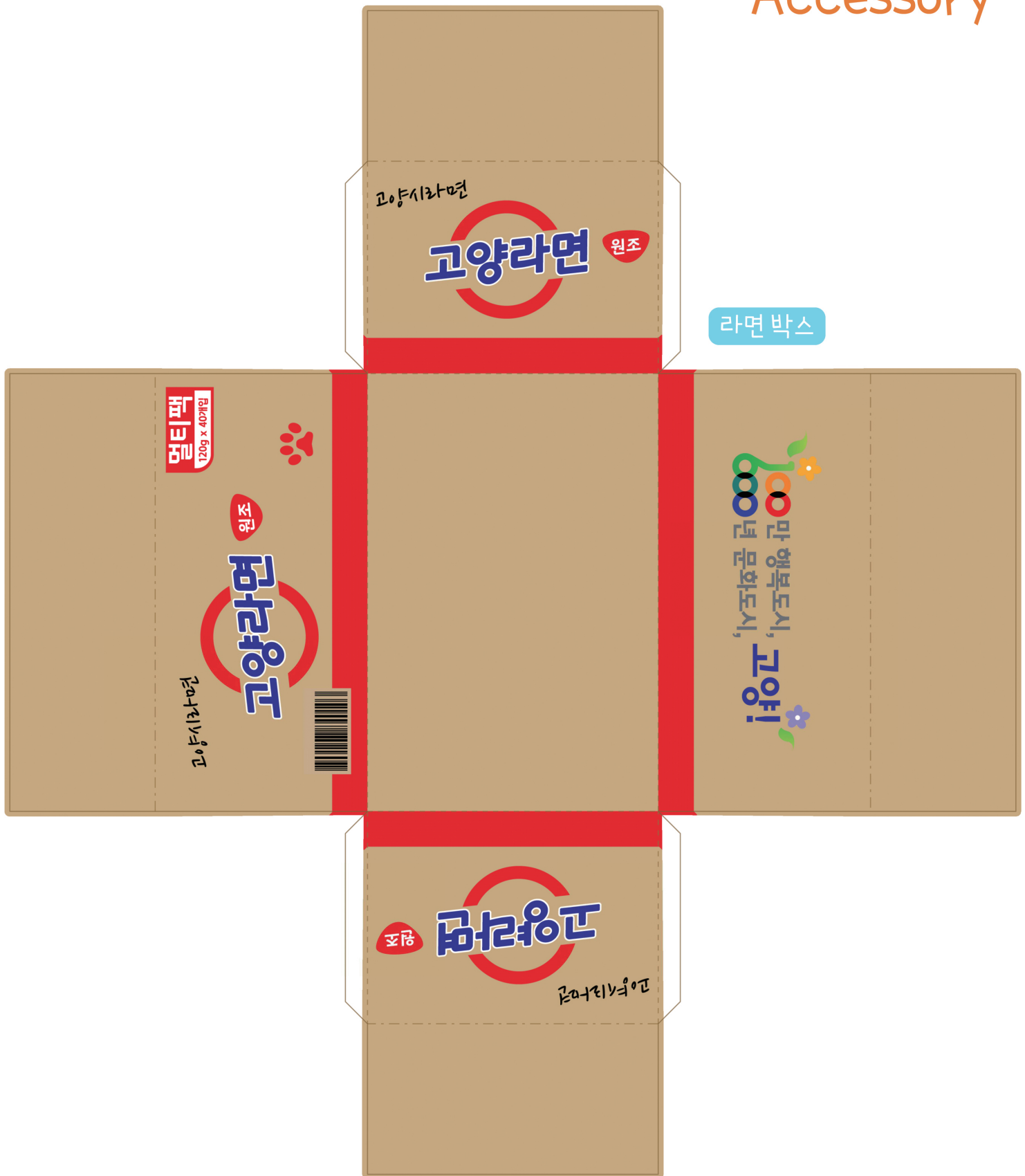
Face



기본 표정 외에도
5가지 추가 표정으로
귀여운 고양고양이를
만들어보세요! 🐱



Accessory

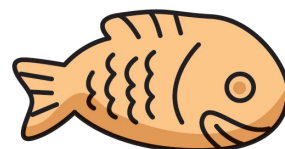


라면 박스

선글라스



붕어빵



꽃

