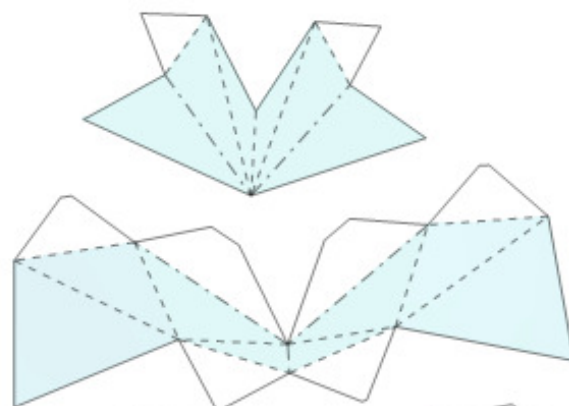
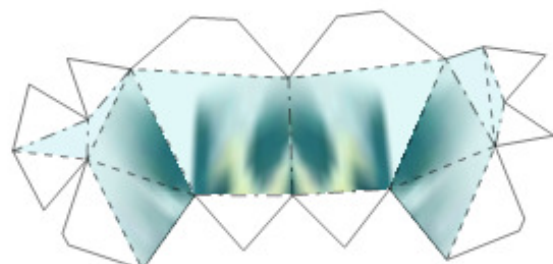
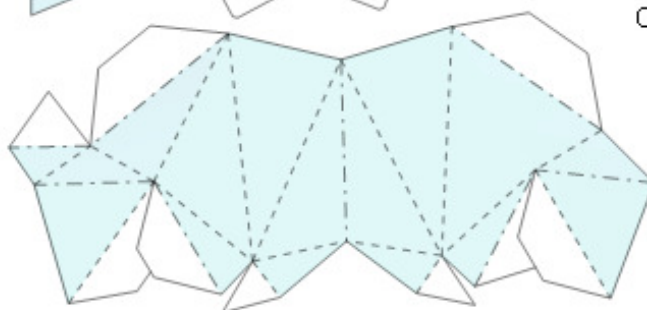


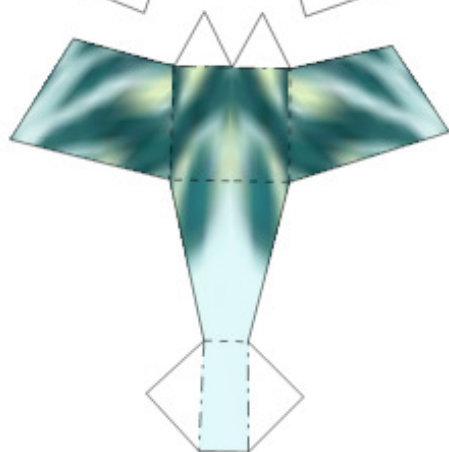
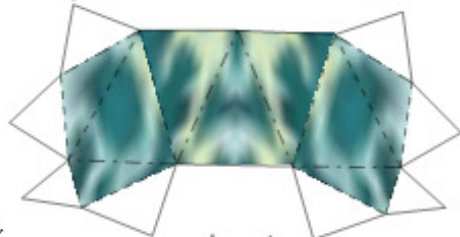
Collar Bone and Shoulders



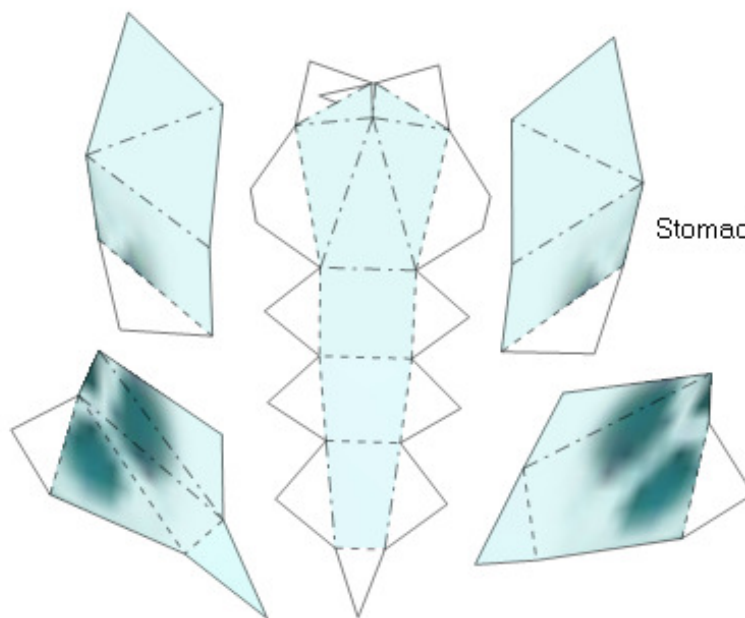
Chest

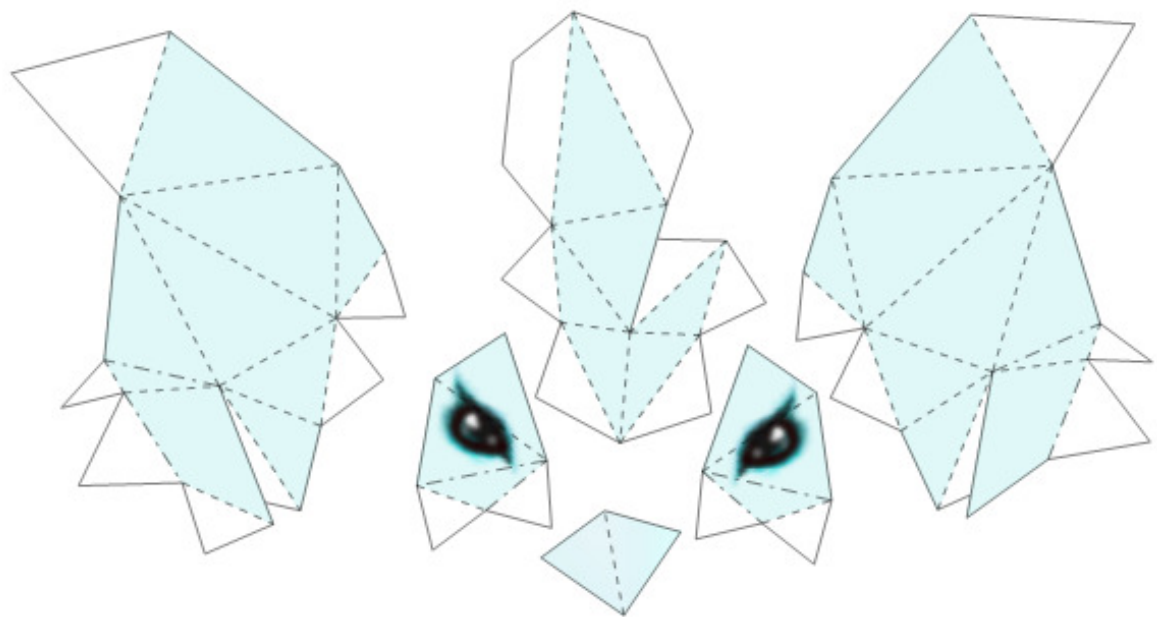


Back



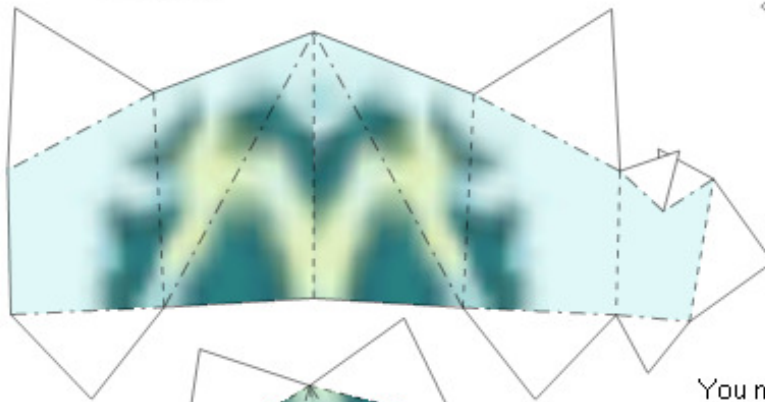
Stomach



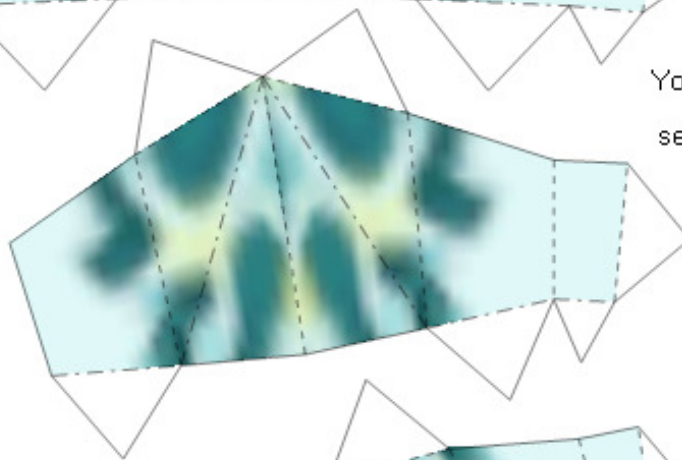


Head Tail

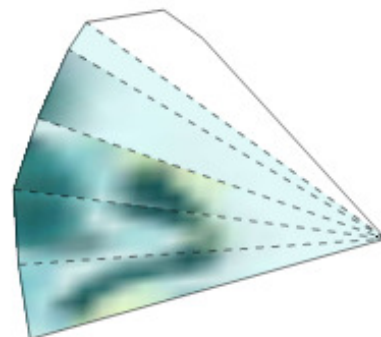
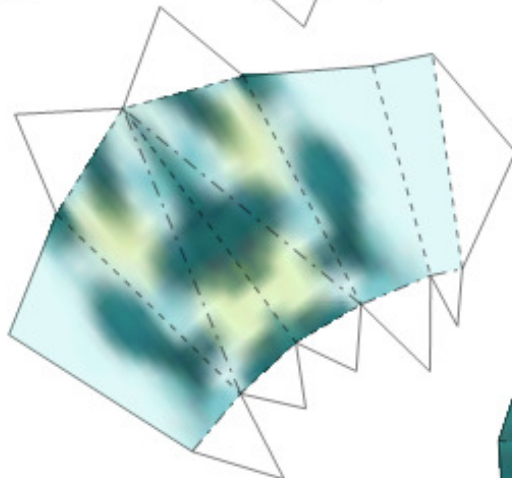
Face and Front Head

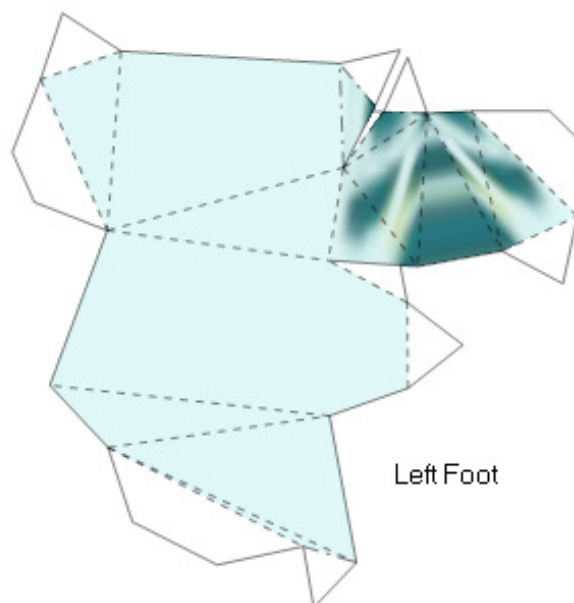
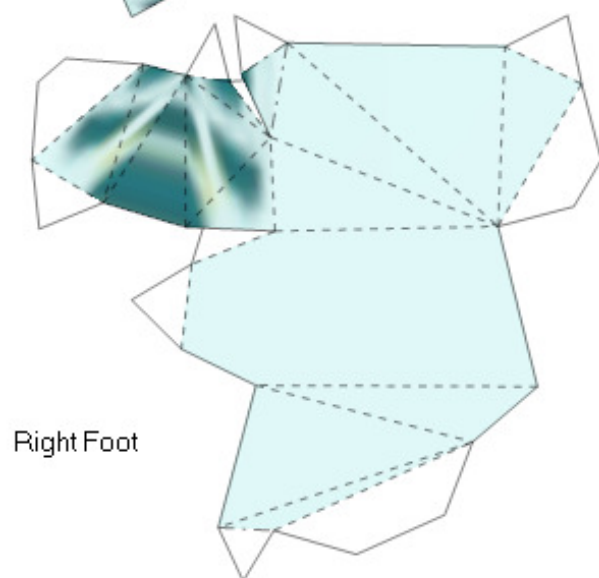
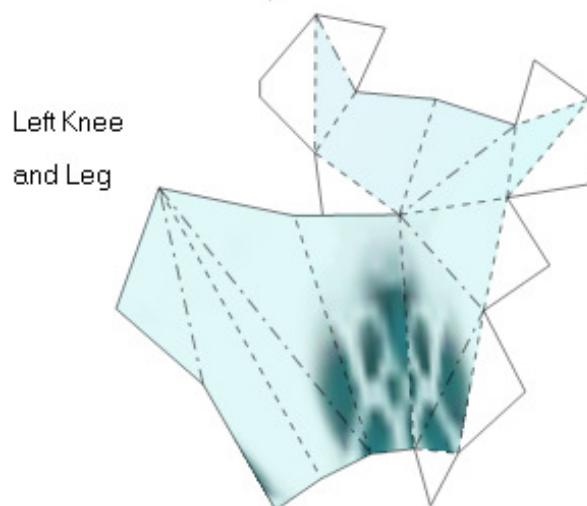
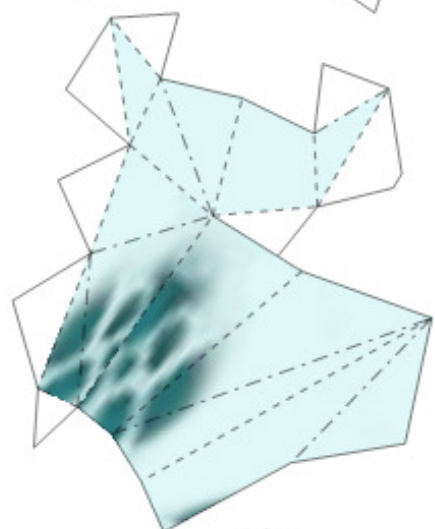
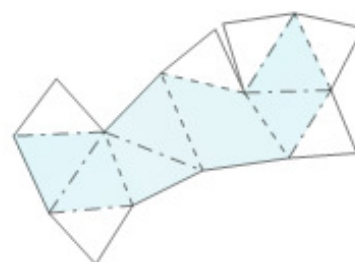
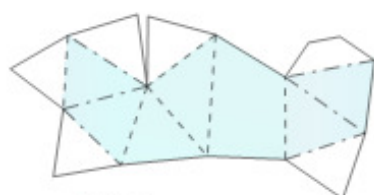
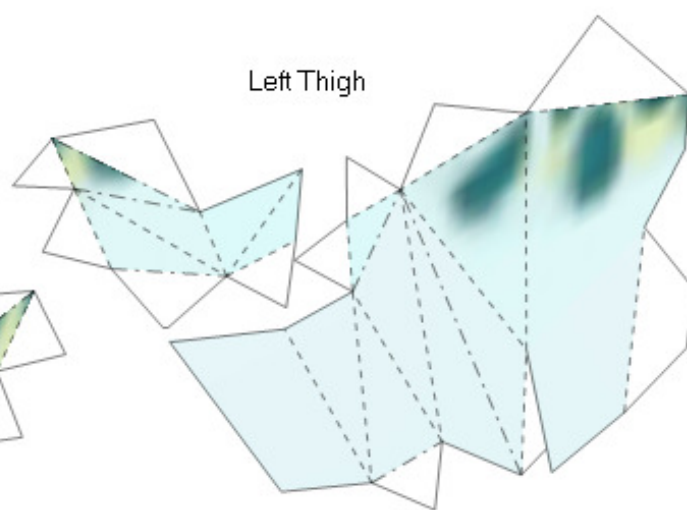
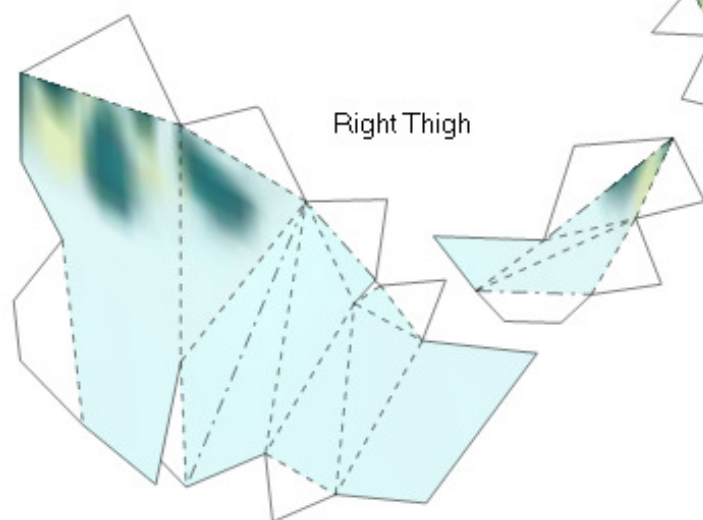


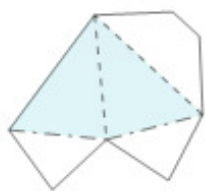
You may want to delay assembling the head-tail segments until the head is glued onto the neck.



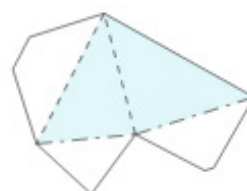
This will allow you to put your finger inside the head to secure the small neck tabs.



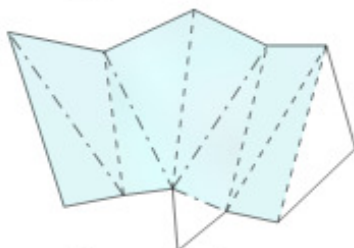




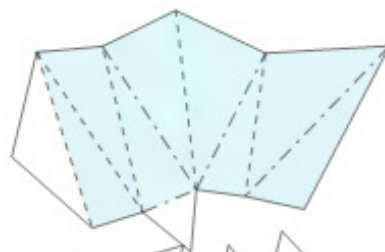
Right
Shoulder



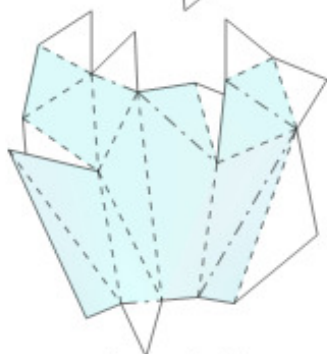
Left Shoulder



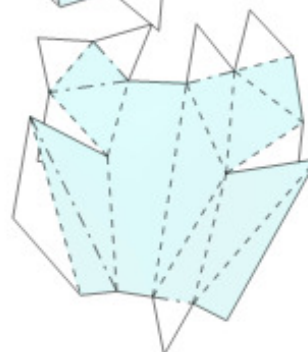
Right Upper
Arm



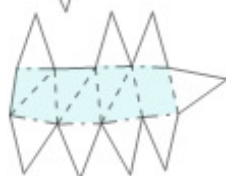
Left Upper
Arm



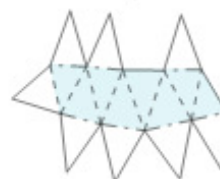
Right Lower
Arm



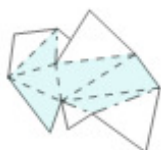
Left Lower
Arm



Right Wrist



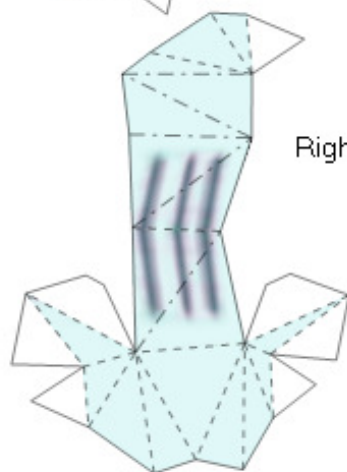
Left Wrist



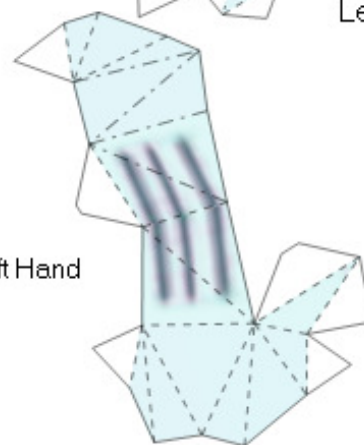
Right Thumb



Left Thumb



Right Hand



Left Hand

