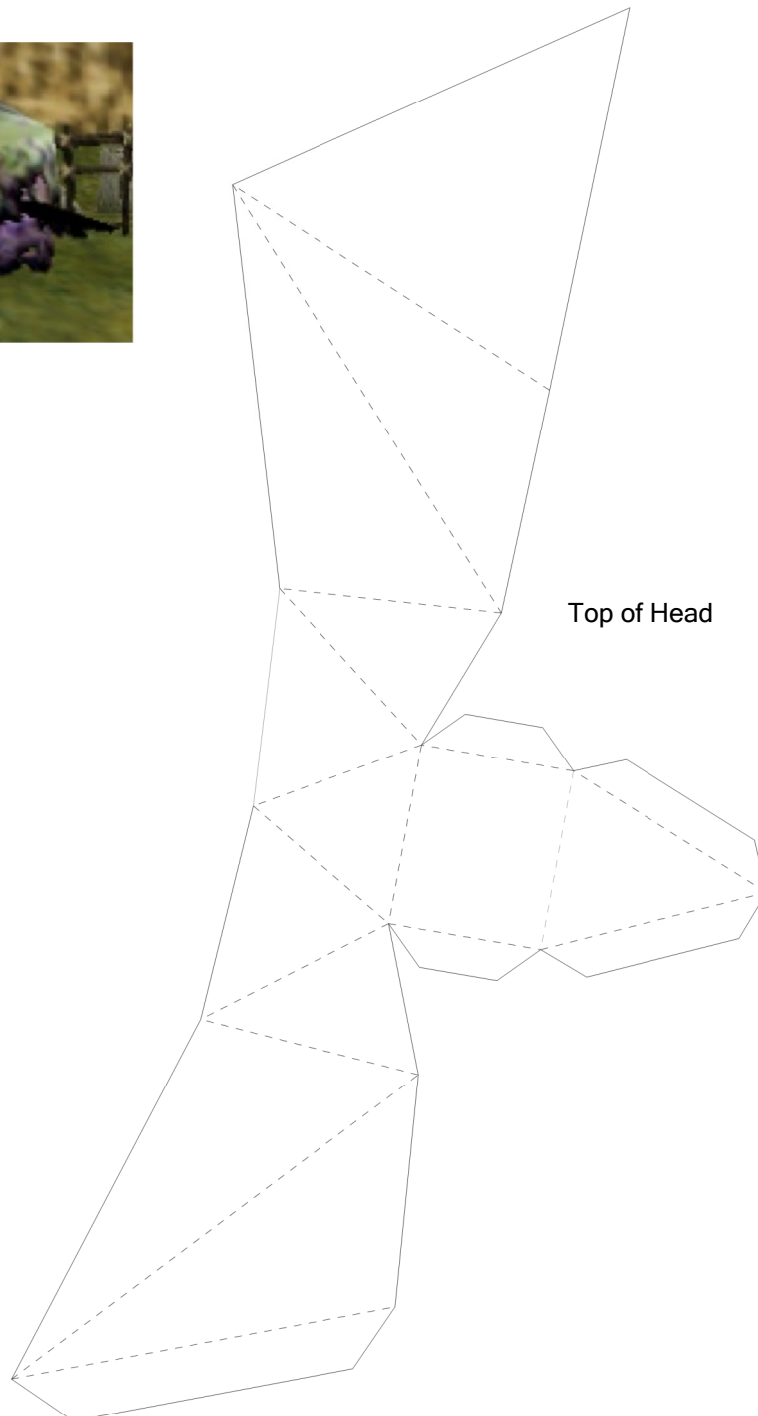


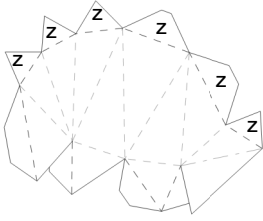
POE

By Xenonray

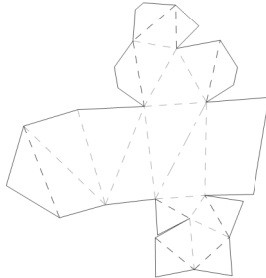


These lantern carrying ghosts often haunt the darker corners of Hyrule and Termina. Although common Poes are quite weak, their ability to float through walls and disappear can make them difficult to track down.

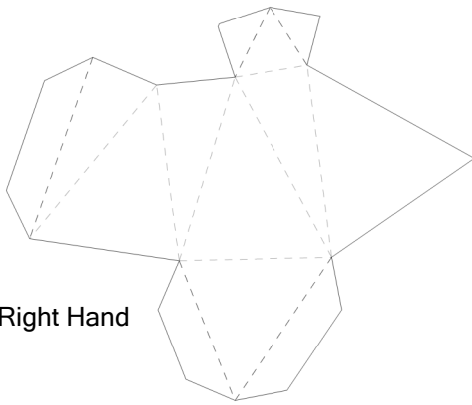




Right Upper Arm



Right Fore Arm



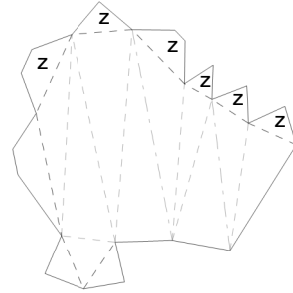
Right Hand

Tabs marked Z
glue onto the
side of the body.

Tabs marked Y
glue onto the
bottom of the
right hand.

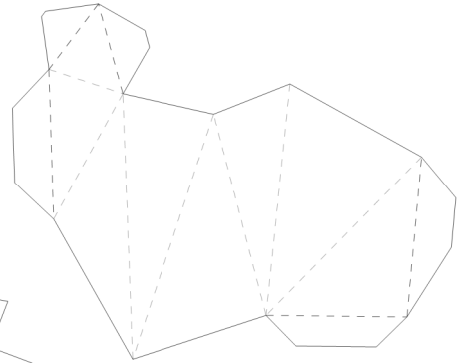
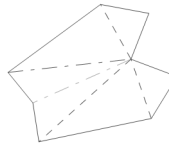
Tabs marked X
glue onto the
centre line of
the face.

Tabs marked W
attach the face
to the body.

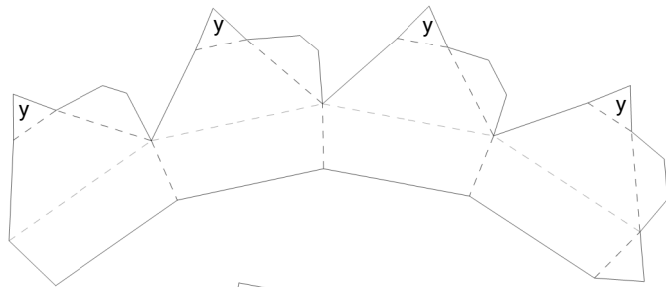


Left Arm

Left Thumb
(2D, glue back-to-back)

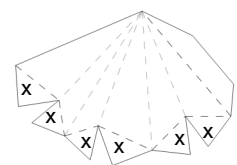
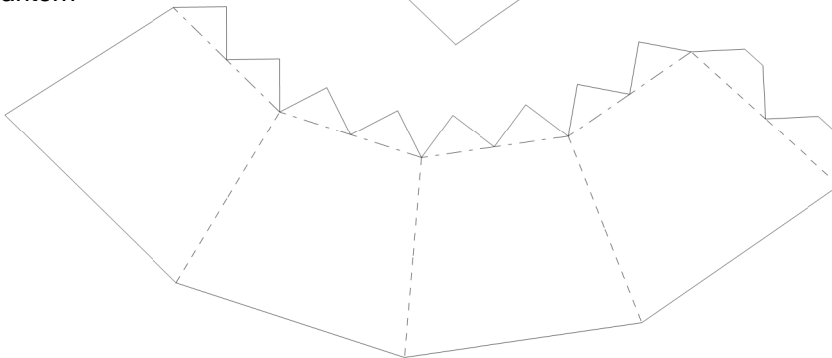


Left Hand

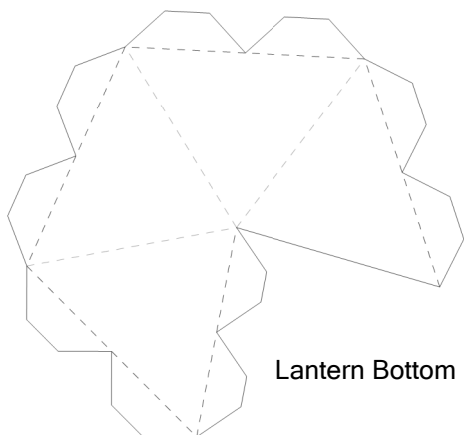


Nose

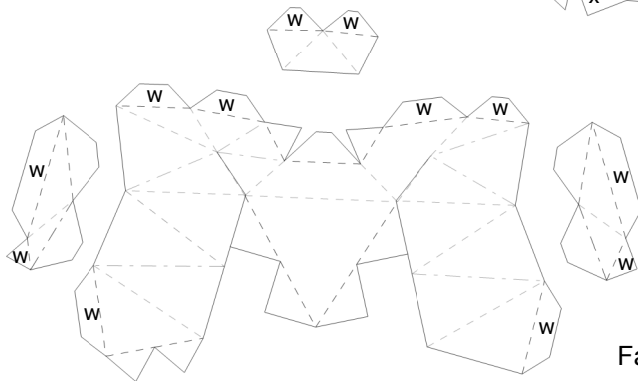
Lantern



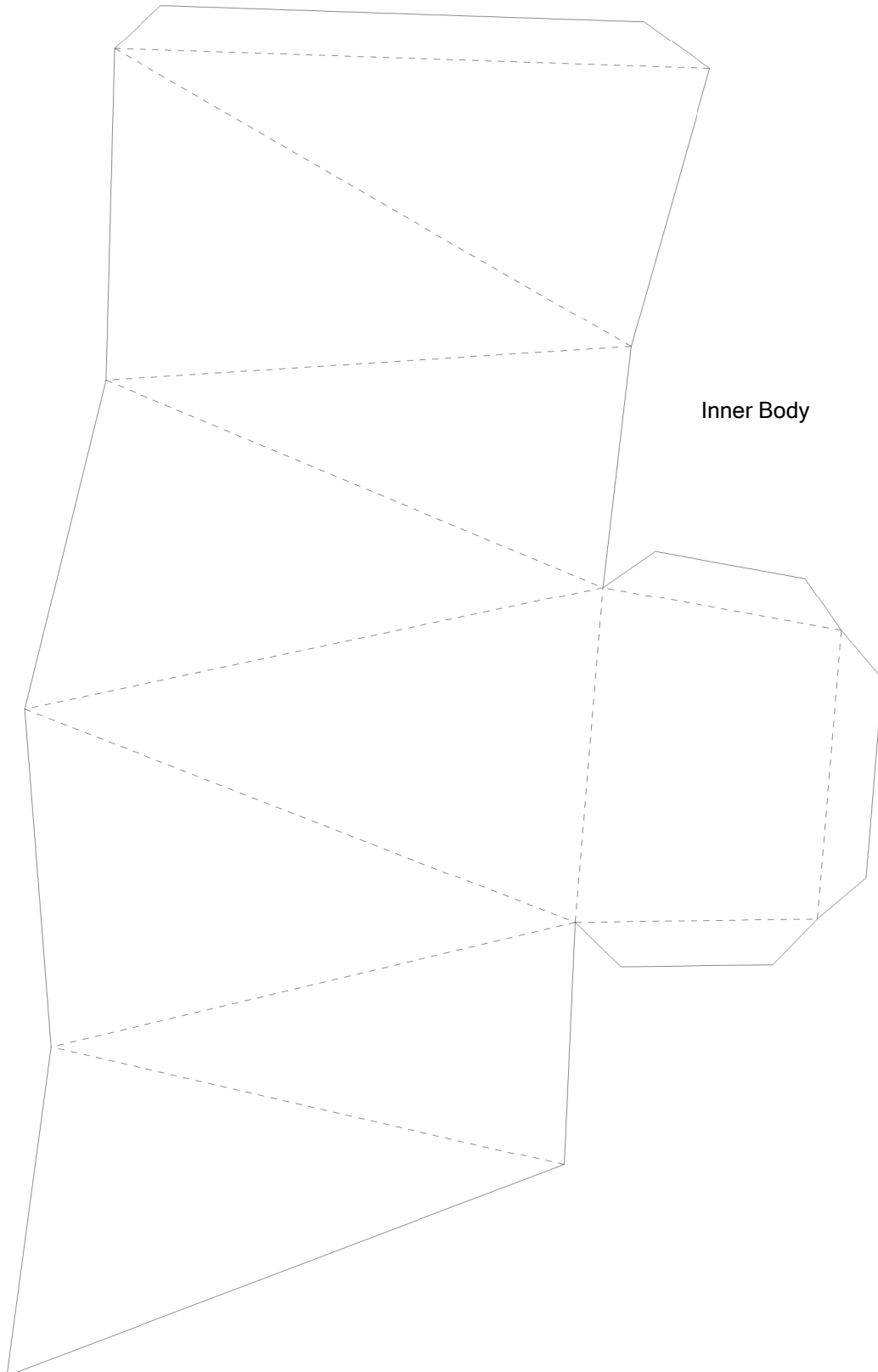
Face



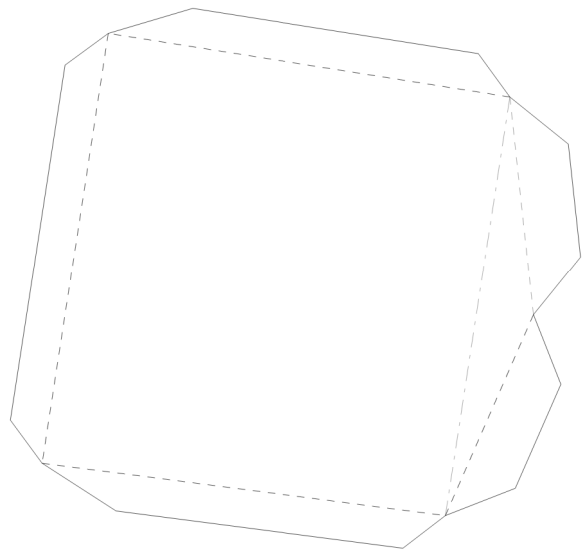
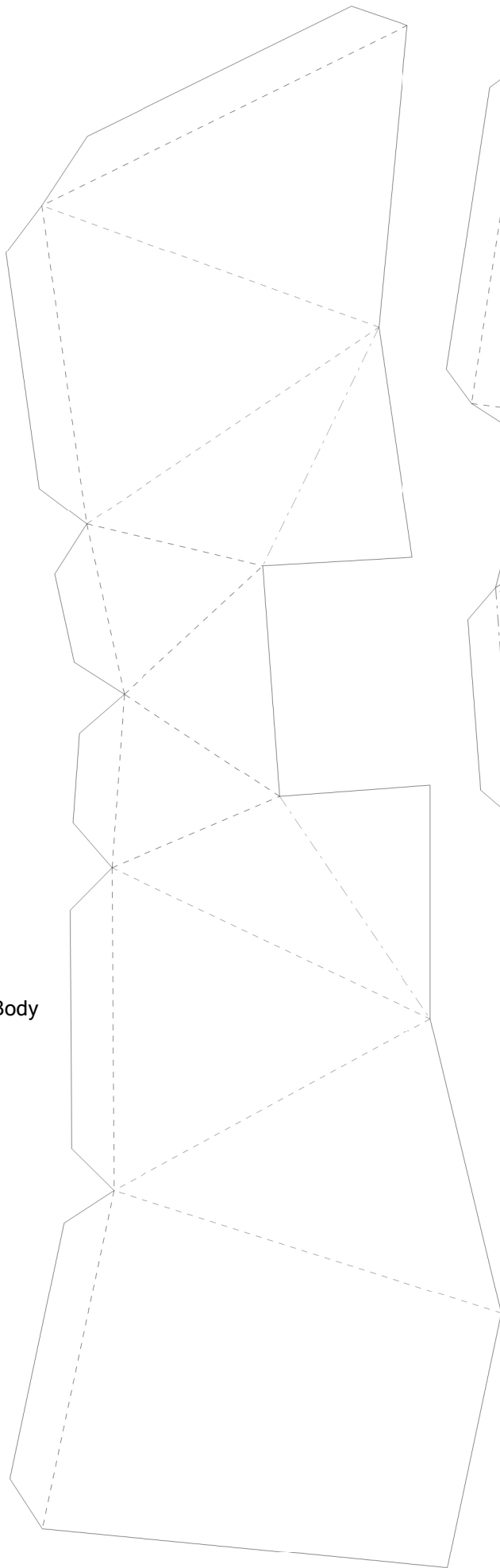
Lantern Bottom



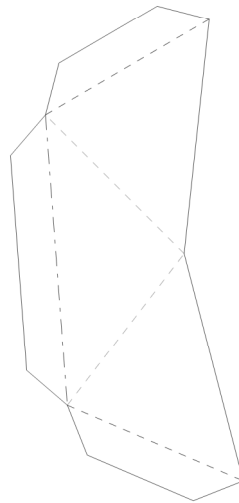
Template by Xenonray,
original 3D data and textures by Nintendo



Outer Body



Inner Attachment
Surface



Outer Body Front