

31.

EXTRA HELP ON
ONI LINK'S HAIR

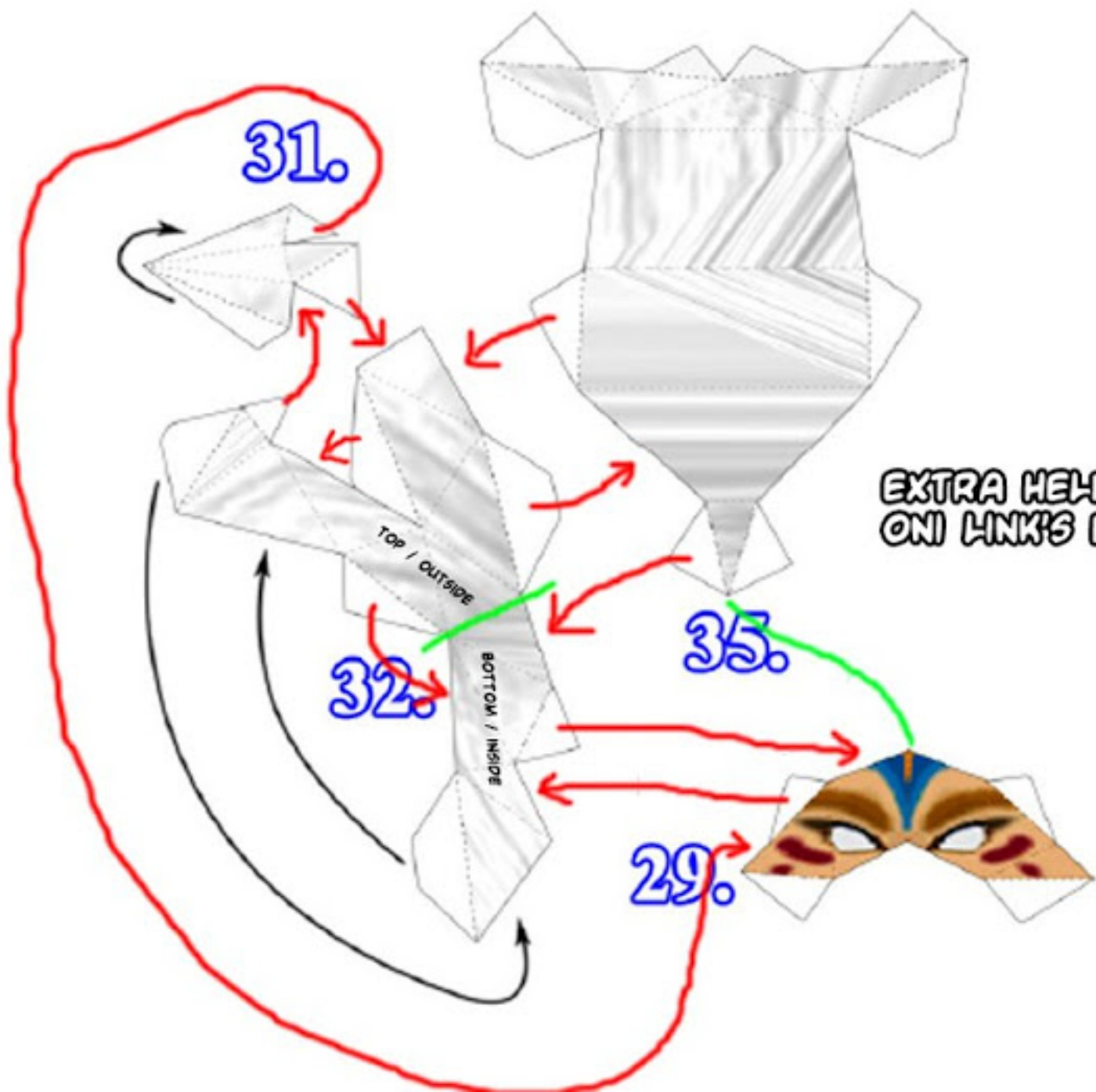
35.

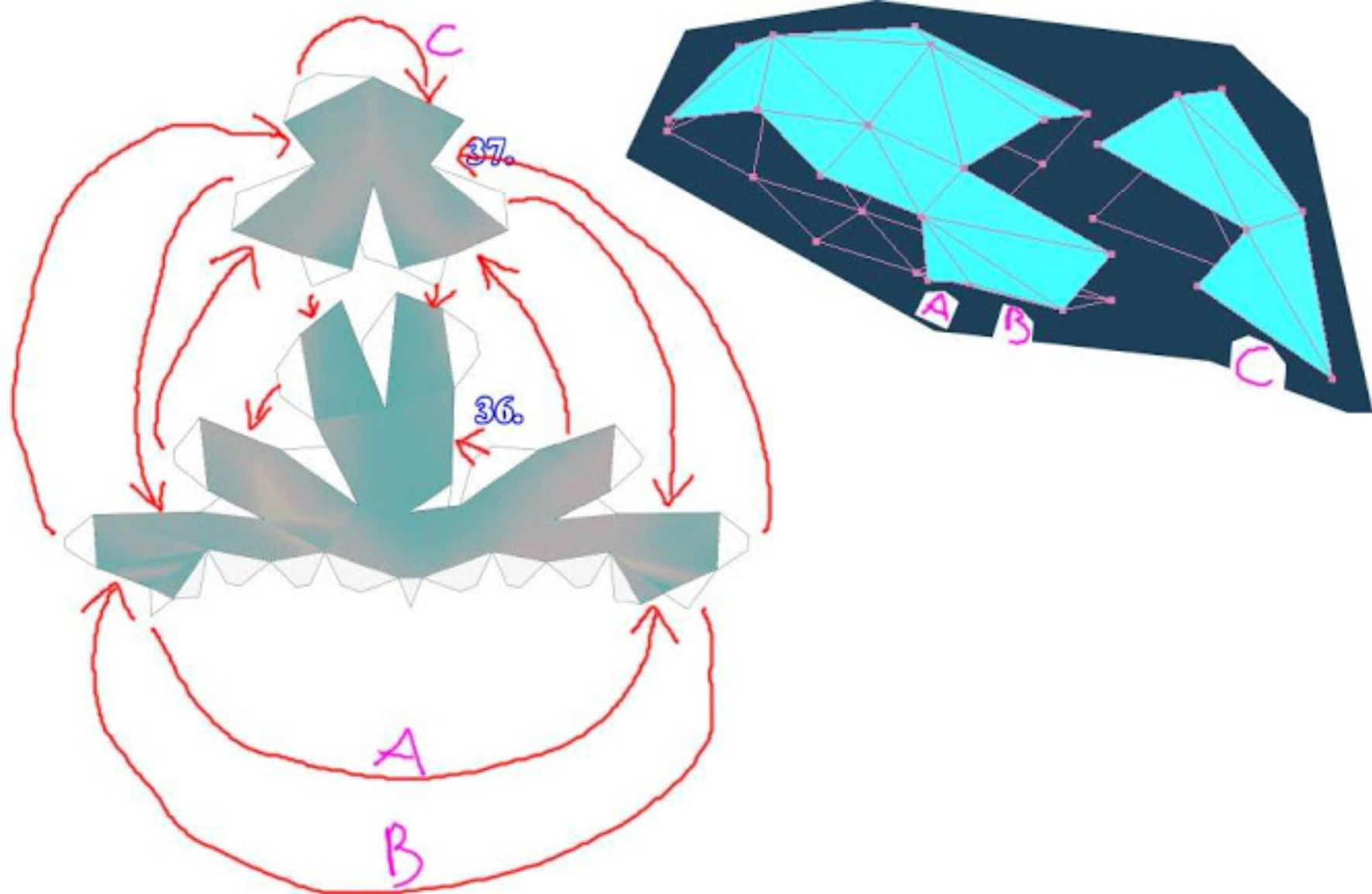
32.

29.

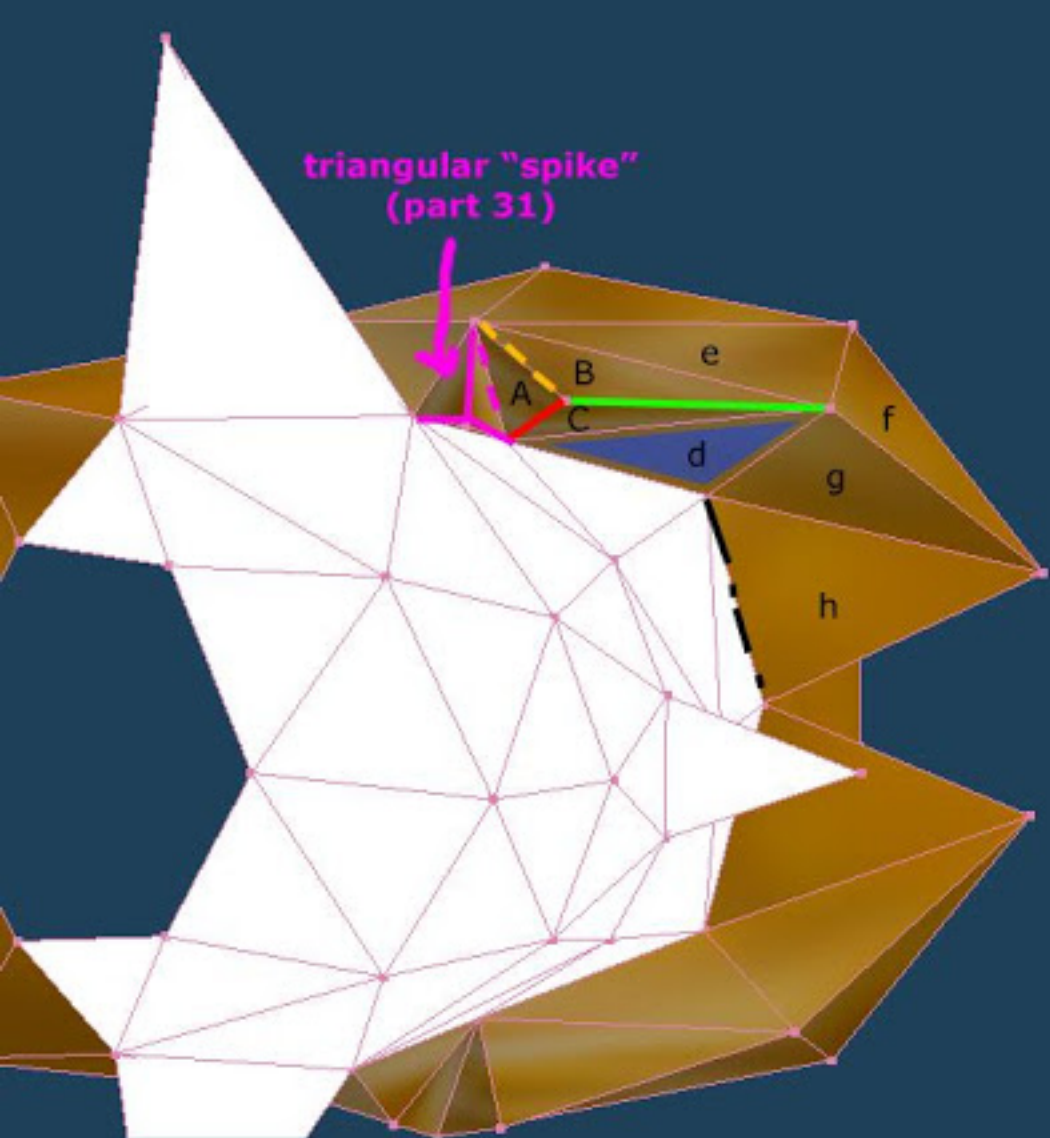
TOP / OUTSIDE

BOTTOM / INSIDE

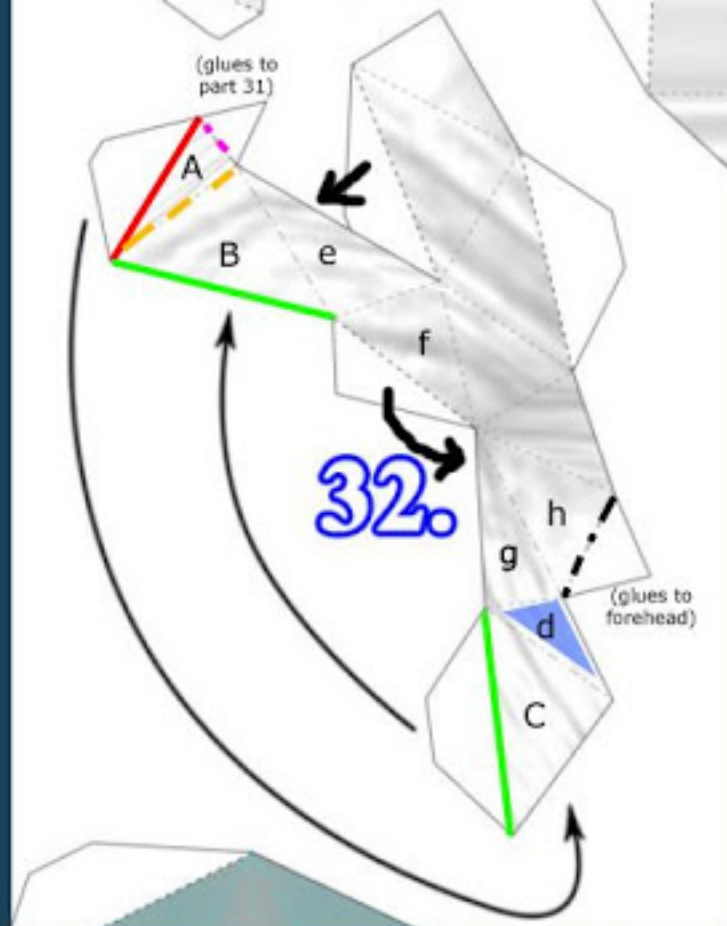




Connecting Oni Link's papercraft hat:
www.kickme.to/ninjatoes

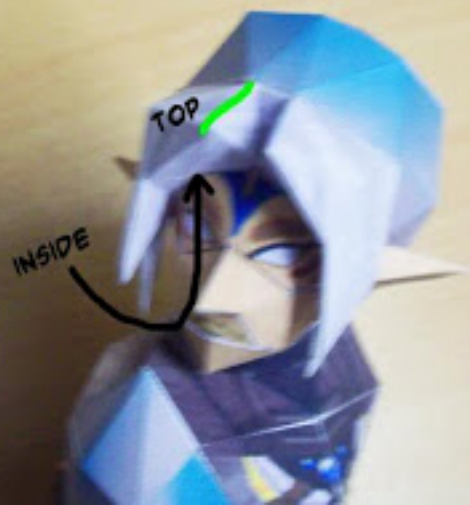


bottom view





ONI LINK PAPERCRAFT MODEL
BY WWW.KICKME.TO/NINJATOES



you don't have to glue
this glueing tab yet!

at first, you only need to
glue together these two
glueing tabs!

you don't have to glue
this glueing tab yet!

you don't have to glue
this glueing tab yet!

16.

17.

18.

PAPERCRAFT ONI LINK
RIGHT ARM HELP

